

An Analysis of San Francisco Eligible Metropolitan Area Ryan White Part A & B For the 2014-2015 Contract Period

Presented to the
HIV Health Services Planning Council
July 27, 2015

Presented By
Celinda Cantú, ADAP & Data Administrator, SFDPH-HHS
Maria Lacayo, ARIES Site Manager, SFDPH-HHS

Additional Data Preparation By:
Matt Geltmaker, STD/HIV Program Director, San Mateo County Health System
Cicily Emerson, Program Manager, Marin Dept. of Health & Human Services



San Francisco Department of Public Health, HIV Health Services
25 Van Ness Ave., Suite 500
San Francisco, CA 94102-6033
(415) 554-9000

Presentation Aspirations

- Will achieve an ARIES overview of the San Francisco Eligible Metropolitan Area (EMA).
- Will provide a demographic and data breakout of all three counties that comprise the EMA.
- Will address the following three data questions:
 - What are the basic demographics of the EMA clients?
 - How are the differences reflected according to gender within the EMA?
 - How are some of the factors affecting health disparities reflected within the EMA?

ARIES Database

- AIDS Regional Information and Evaluation System, also known as ARIES, is an internet-based client case management information system offered by the California Department of Health Services, Office of AIDS (SOA).
- ARIES is fully compliant with all Health Resource Service Administration's reporting requirements.
- All system maintenance and programming costs are borne by the SOA.
- ARIES has data importing capacity, which is currently utilized by some EMA agencies, with more agencies in the planning process for data import.

Notes on the Data (1 of 2)

- **Reporting Period**: 3/1/14 to 2/28/15.
- **Funding Source**: Ryan White Part A &B
- **Date of Data**: These reports are based on the data in ARIES as of July 23, 2015.
- **Total EMA Unduplicated Client Count (UDC)**:
N=6,503

Notes on the Data (2 of 2)

- Data element responses are based upon client self-identification.
- “Unknown” means the provider attempted to collect the data, but the client was unable to answer.
- “Missing” means the question was not asked & the data element was left blank.
- Federal Poverty Level (FPL) is based on household income and size.
- Current Living Situation categories are HRSA defined as:
 - Stable: Client owns, rents or is in an assisted living facility.
 - Temporary: Client is in a transitional or treatment program; in jail or hospital/medical facility or staying with friends.
 - Unstable: Client is homeless stays mostly in streets, parks, car or shelters.

Data Question #1

What are the basic demographics of the EMA clients?

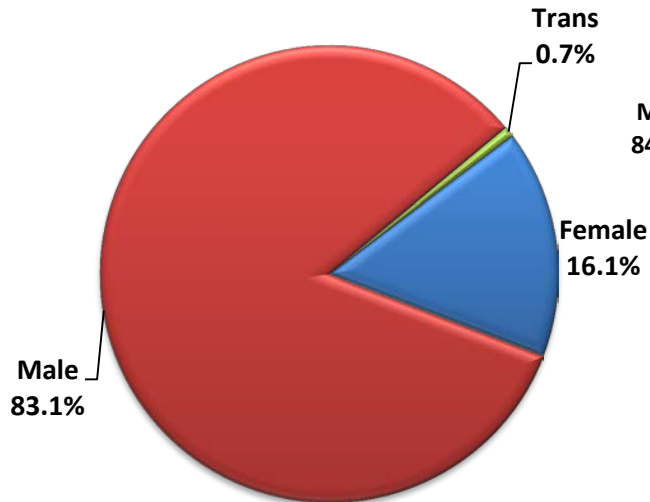
EMA Factoids

- **EMA-Wide** – The UDC is **6,503 (N = 6,503)** of which 583 or 9.0% of clients served in the EMA were “new” and 26 or 0.4% died during the reporting period. There are 158 or **2.4% shared clients** within the EMA. *Please note, with the addition of “SF Add-backs” the total EMA UDC becomes 7,347 which is an increase of 13.0% over those served with RWPA &B.*
- **Marin County** – The Marin UDC is 267 (n = 267) or **4.1%** of total EMA UDC. Thirty four(34) or 12.7% clients served in Marin were “new” and no clients died during the reporting period.
- **San Francisco County** – The San Francisco UDC is 5,845 (n = 5,845) or **89.9%** of total EMA UDC. Five hundred twelve (512) or 8.8% clients served in San Francisco were “new” and 22 or 0.4% died during the reporting period. *With “SF Add-backs” the total SF UDC becomes 6,804 which is an increase of 16.5% over those served with RWPA &B.*
- **San Mateo County** – The San Mateo UDC is 549 or **8.4%** of total EMA UDC. Fifty nine (59) or 10.7% clients served in San Mateo were “new” and 6 or 1.1% died during the reporting period.
- The UDC for each of the above groups are reflected in the following slides.

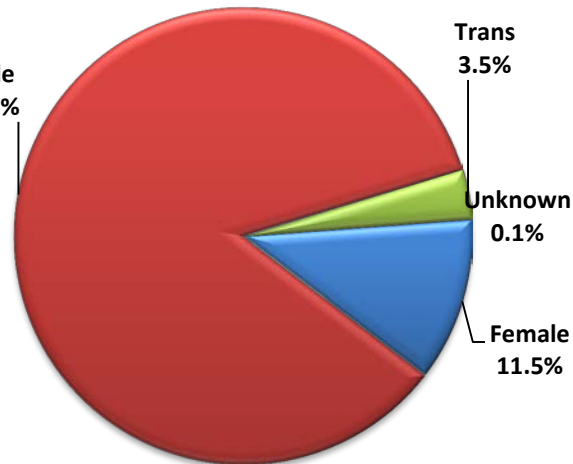
Gender

Female	Male	Transgender	Unknown
n=782	n=5505	n=211	n=5
12.0%	84.7%	3.2%	0.1%

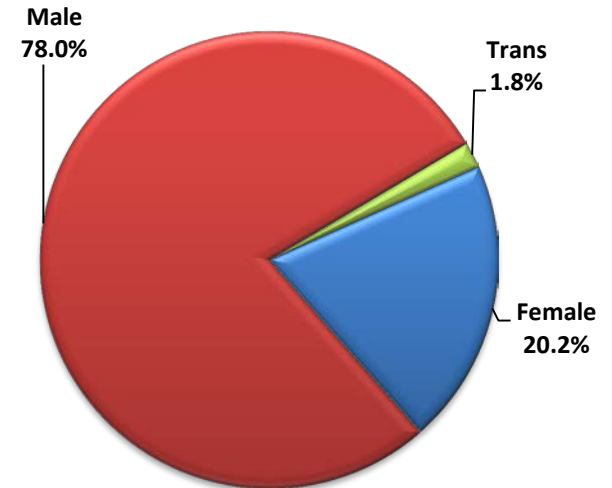
Marin



San Francisco

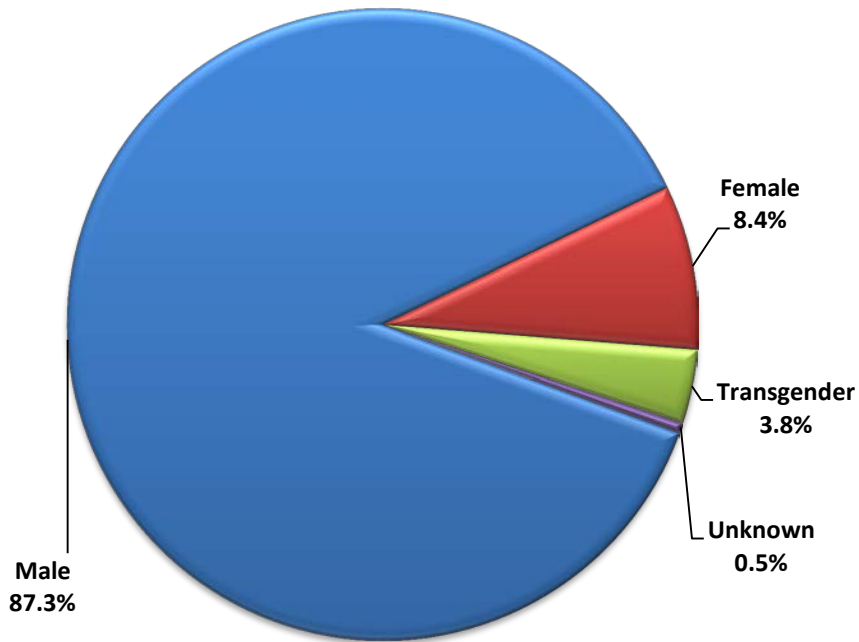


San Mateo

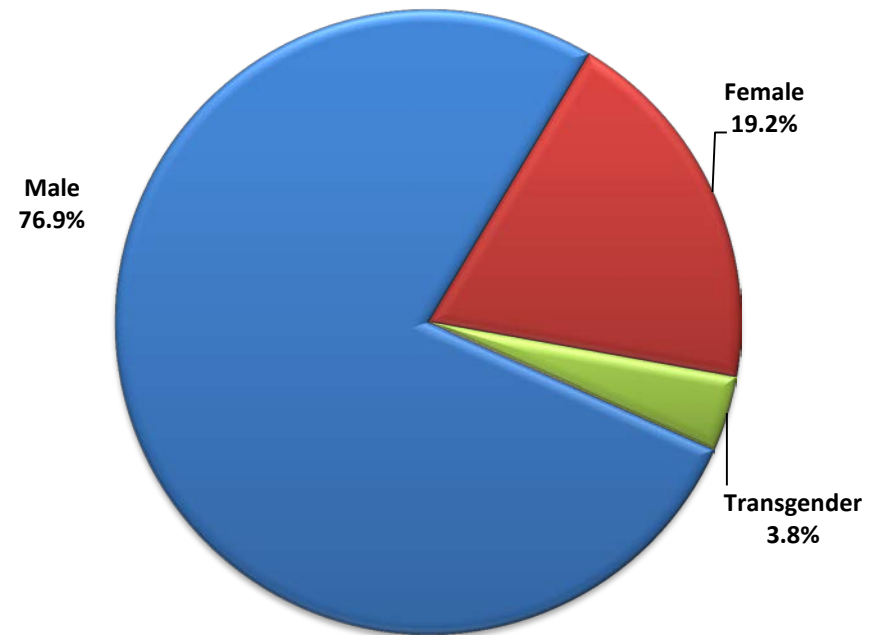


EMA Gender By New & Deceased Clients

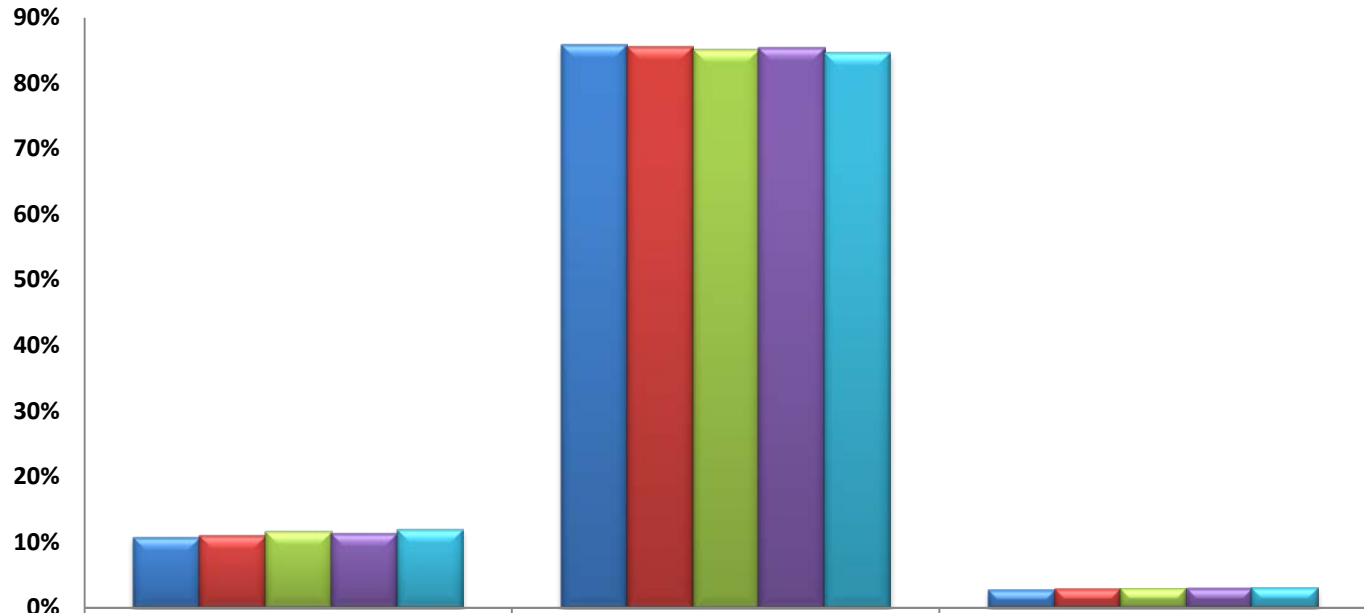
EMA New (n=583)



EMA Deceased (n=26)



EMA By Gender 2011-2015

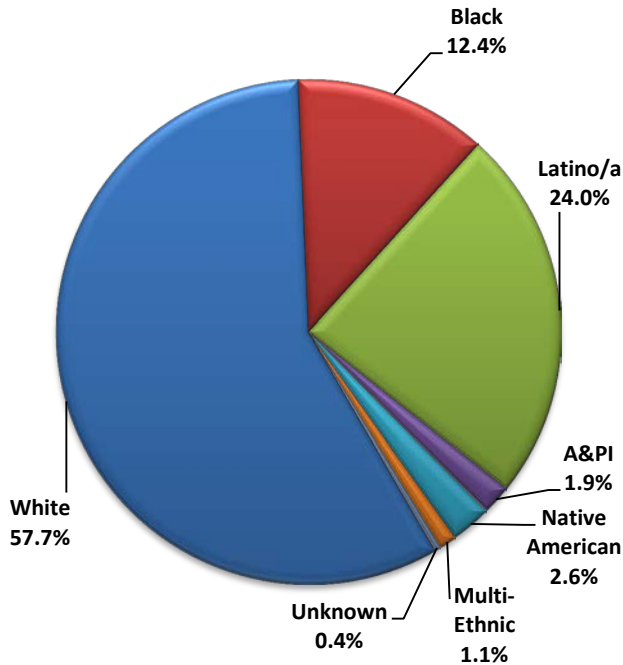


	Female	Male	Transgender
■ 2011 (N=7625)	10.8%	85.9%	2.8%
■ 2012 (N=7421)	11.0%	85.6%	3.0%
■ 2013 (N=7222)	11.7%	85.2%	2.9%
■ 2014 (N=6915)	11.4%	85.4%	3.1%
■ 2015 (N=6503)	12.0%	84.7%	3.2%

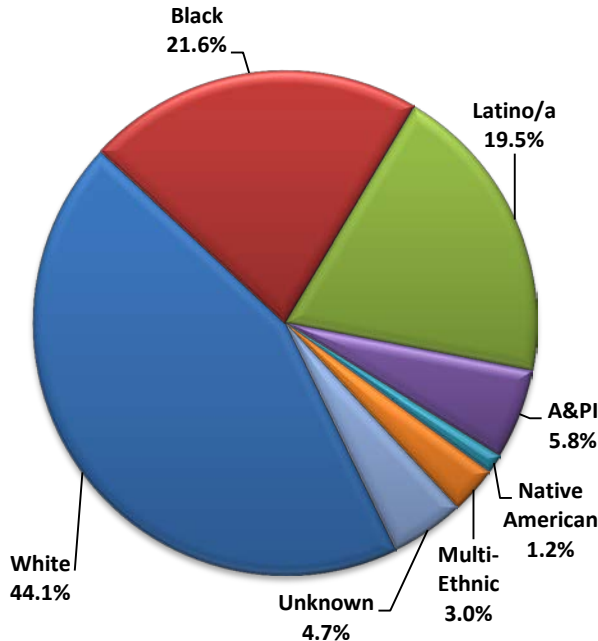
RACE

White	Black	Latino/a	Asian & Pacific Islander (A&PI)	Native American	Multi-Ethnic	Unknown
n=2835	n=1348	n=1375	n=382	n=82	n=185	n=296
43.6%	20.7%	21.1%	5.9%	1.3%	2.8%	4.6%

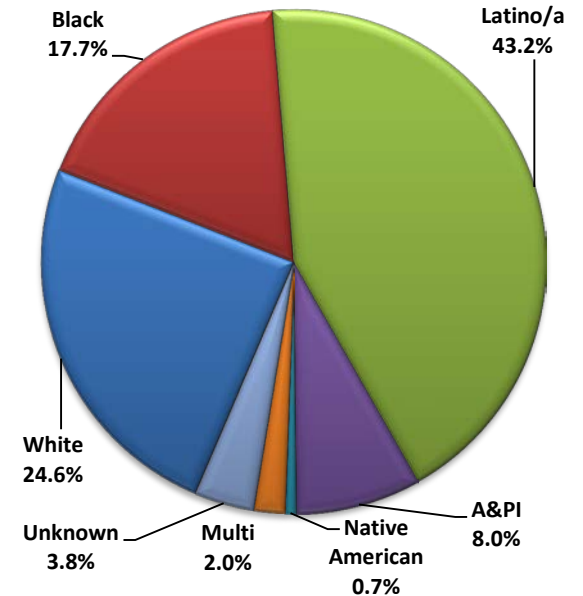
Marin



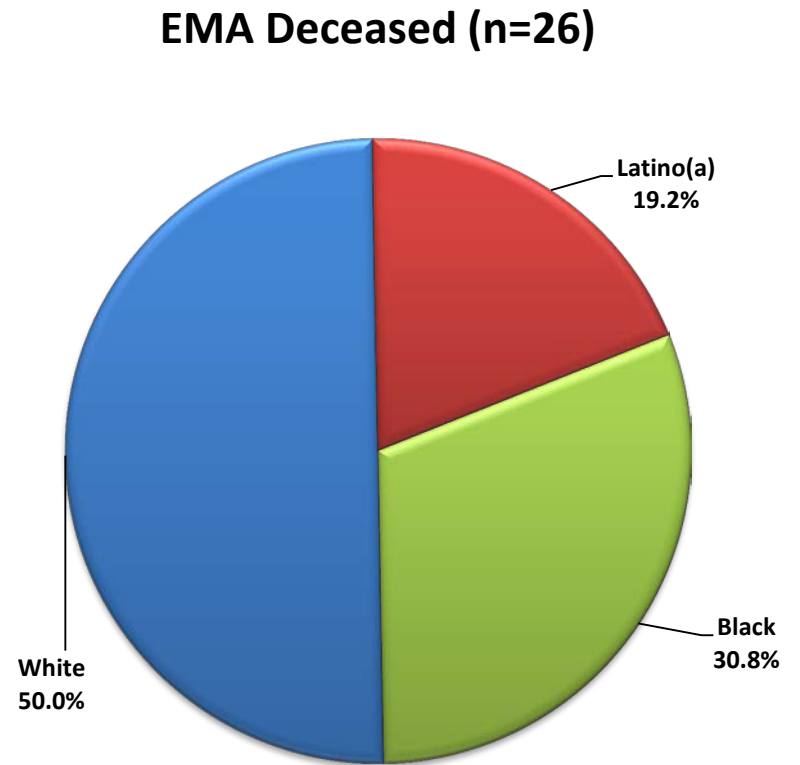
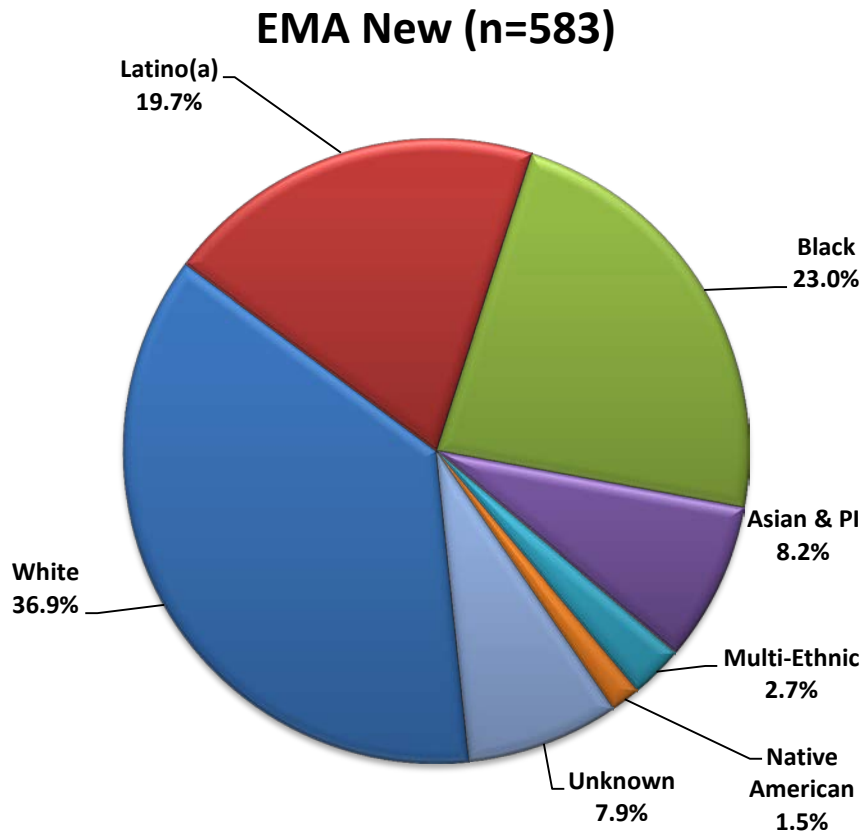
San Francisco



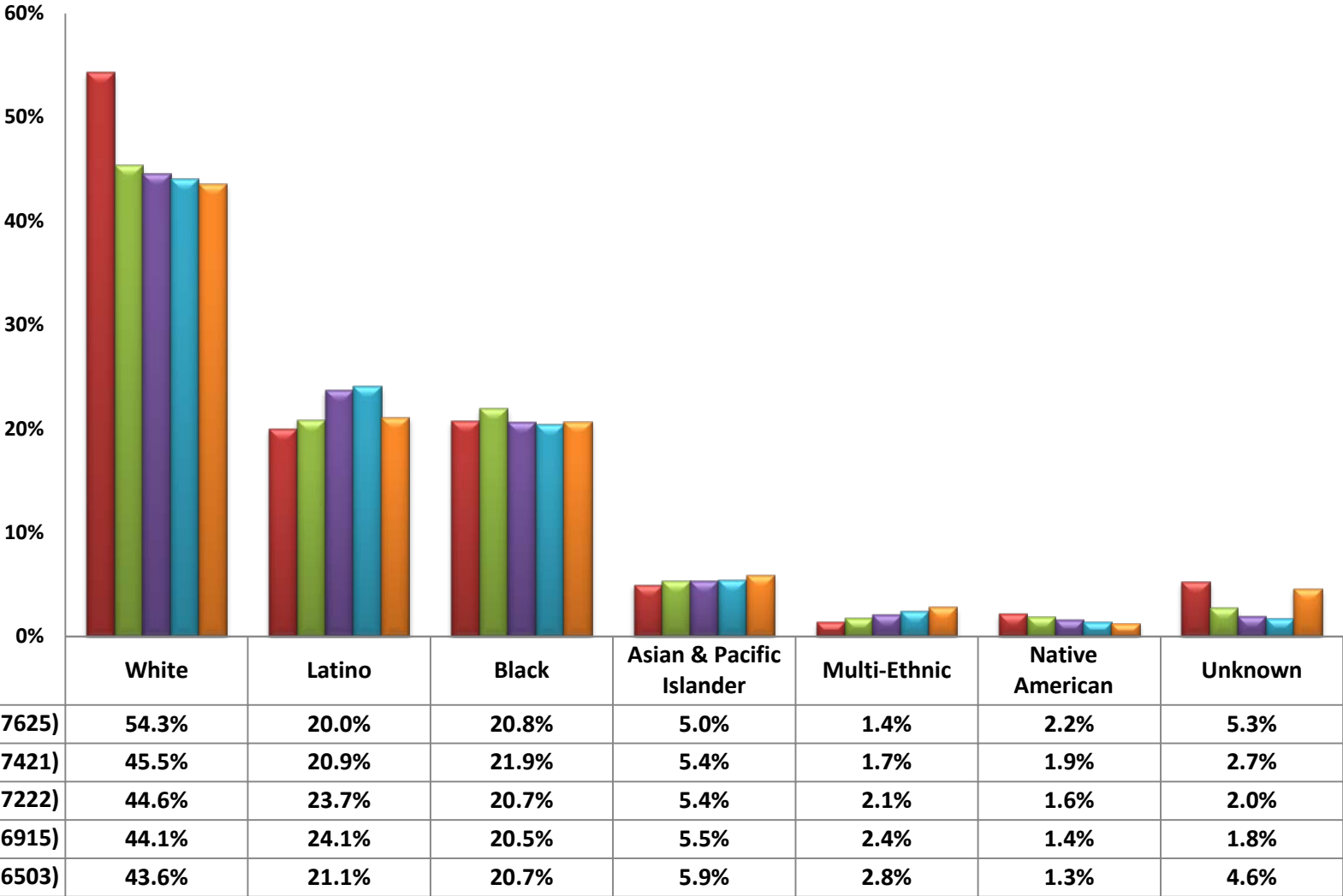
San Mateo



EMA Race By New & Deceased Clients



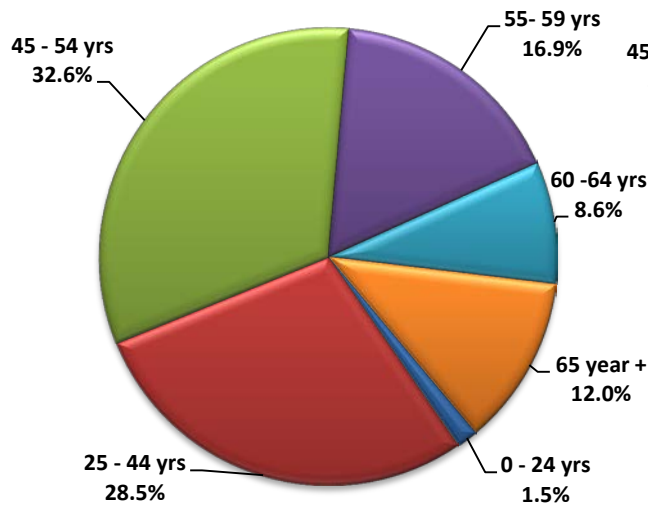
EMA By Race 2011-2015



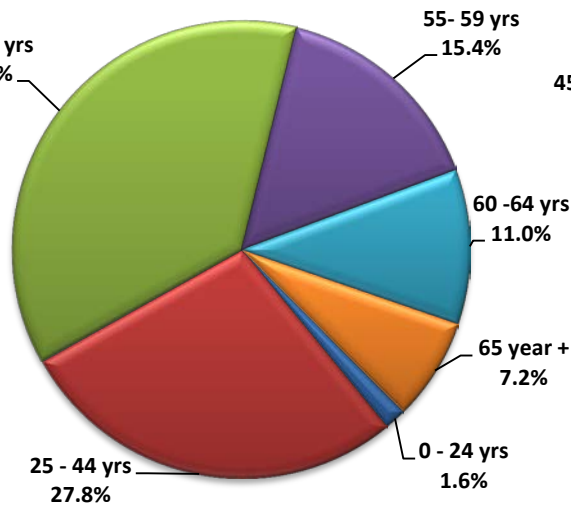
AGE

0 - 24 years	25 - 44 years	45 - 54 years	55 - 59 years	60 - 64 years	65 years +
n=105	n=1865	n=2370	n=990	n=693	n=480
1.6%	28.7%	36.4%	15.2%	10.7%	7.4%

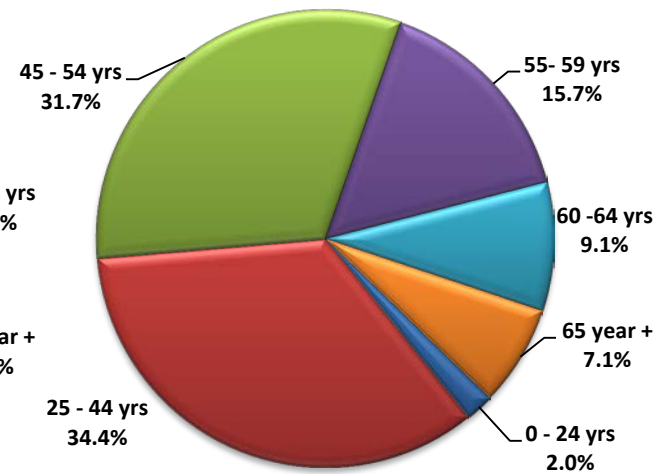
Marin



San Francisco

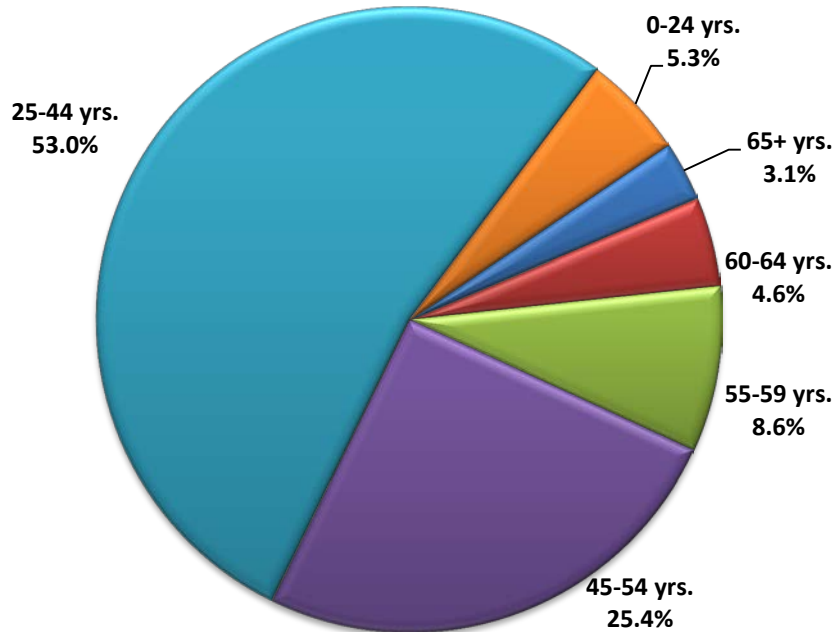


San Mateo

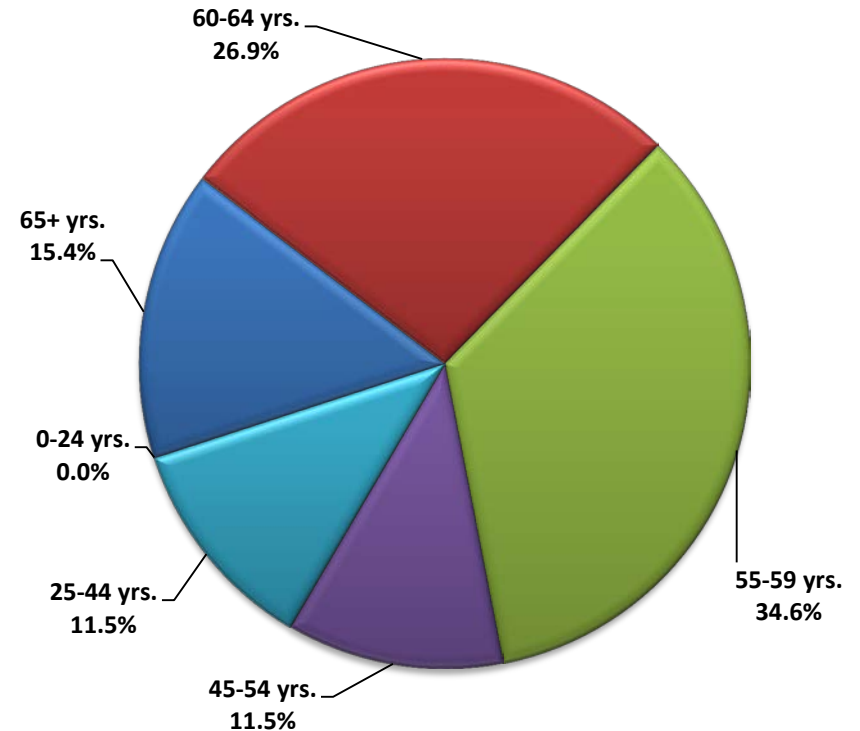


EMA Age By New & Deceased Clients

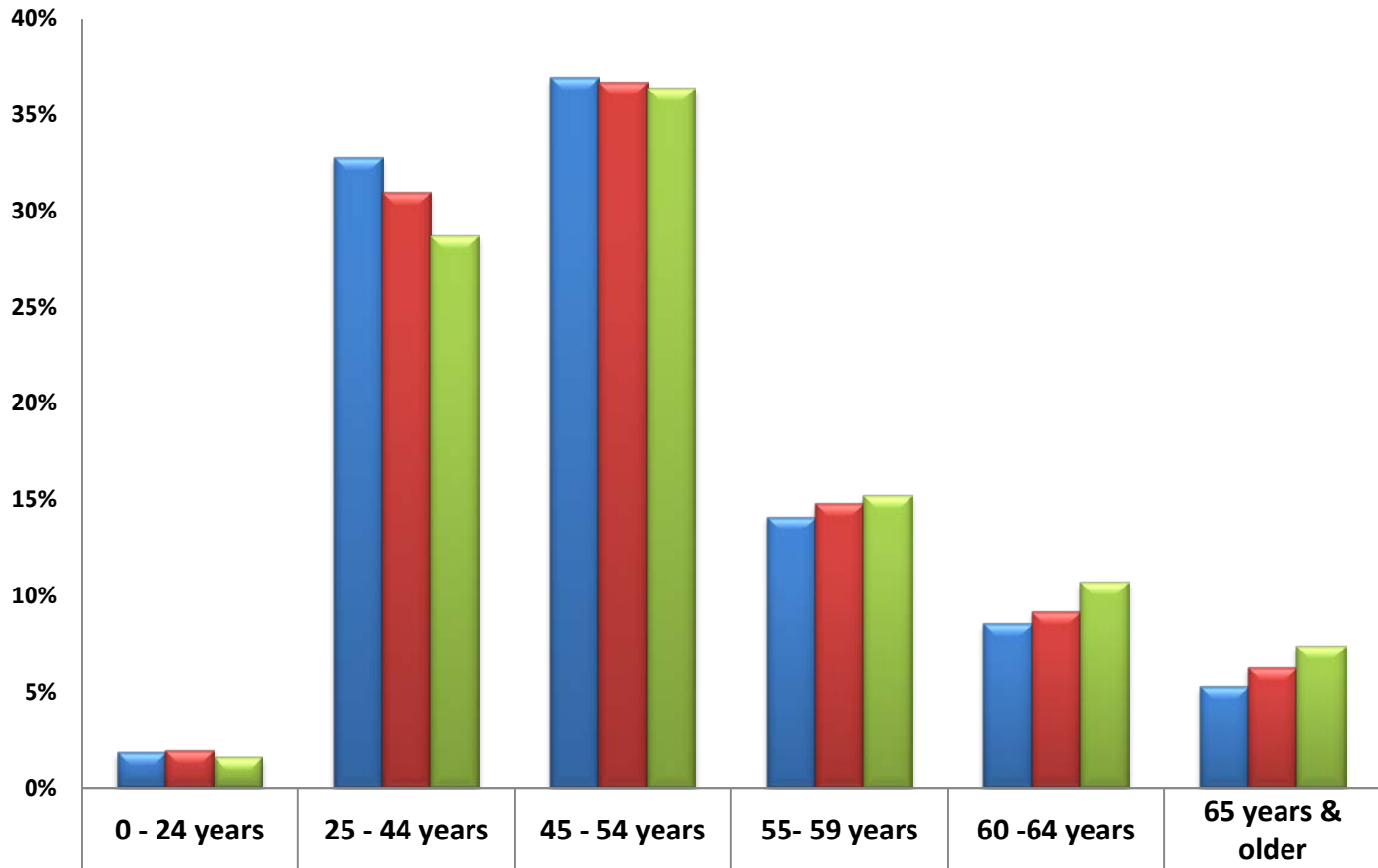
EMA New (n=583)



EMA Deceased (n=26)



EMA By Age 2013-2015

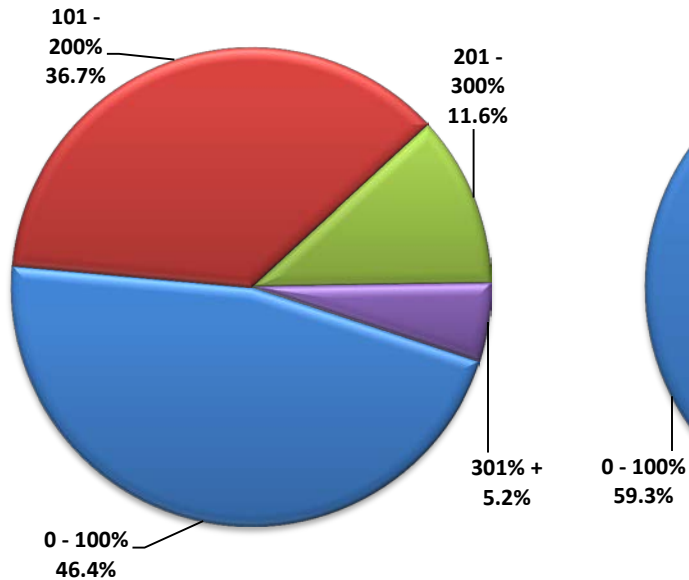


2013 (N=7222)	1.9%	32.8%	36.9%	14.1%	8.6%	5.3%
2014 (N=6915)	2.0%	31.0%	36.7%	14.8%	9.2%	6.3%
2015 (N=6503)	1.6%	28.7%	36.4%	15.2%	10.7%	7.4%

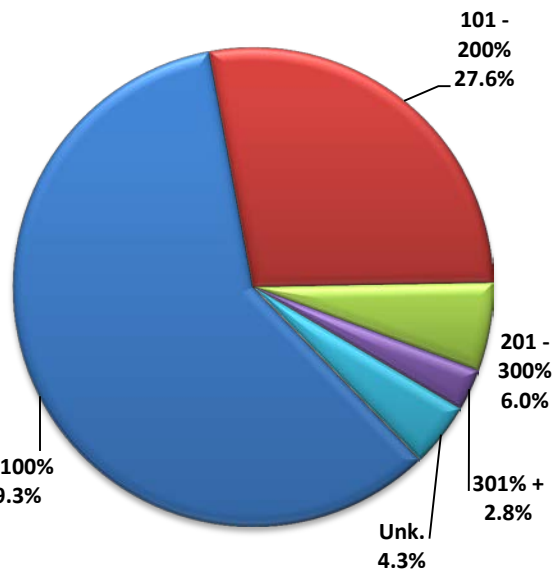
Federal Poverty Level Percentage

0 - 100%	101 - 200%	201 - 300%	301 %+	Unknown
n=3775	n=1851	n=423	n=195	n=259
58.1%	28.5%	6.5%	3.0%	4.0%

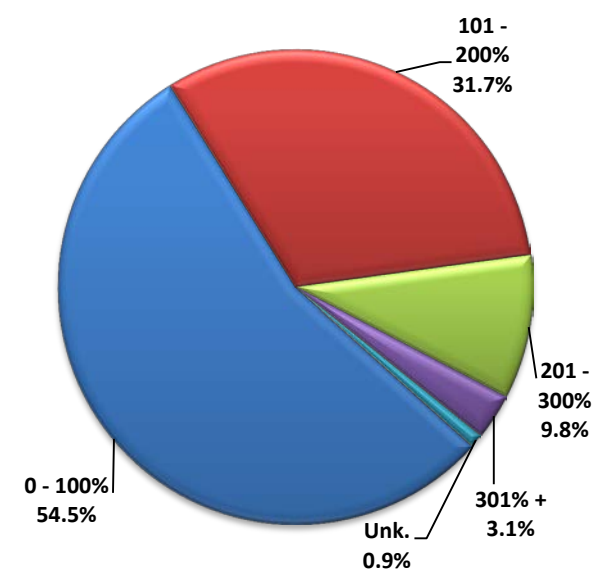
Marin



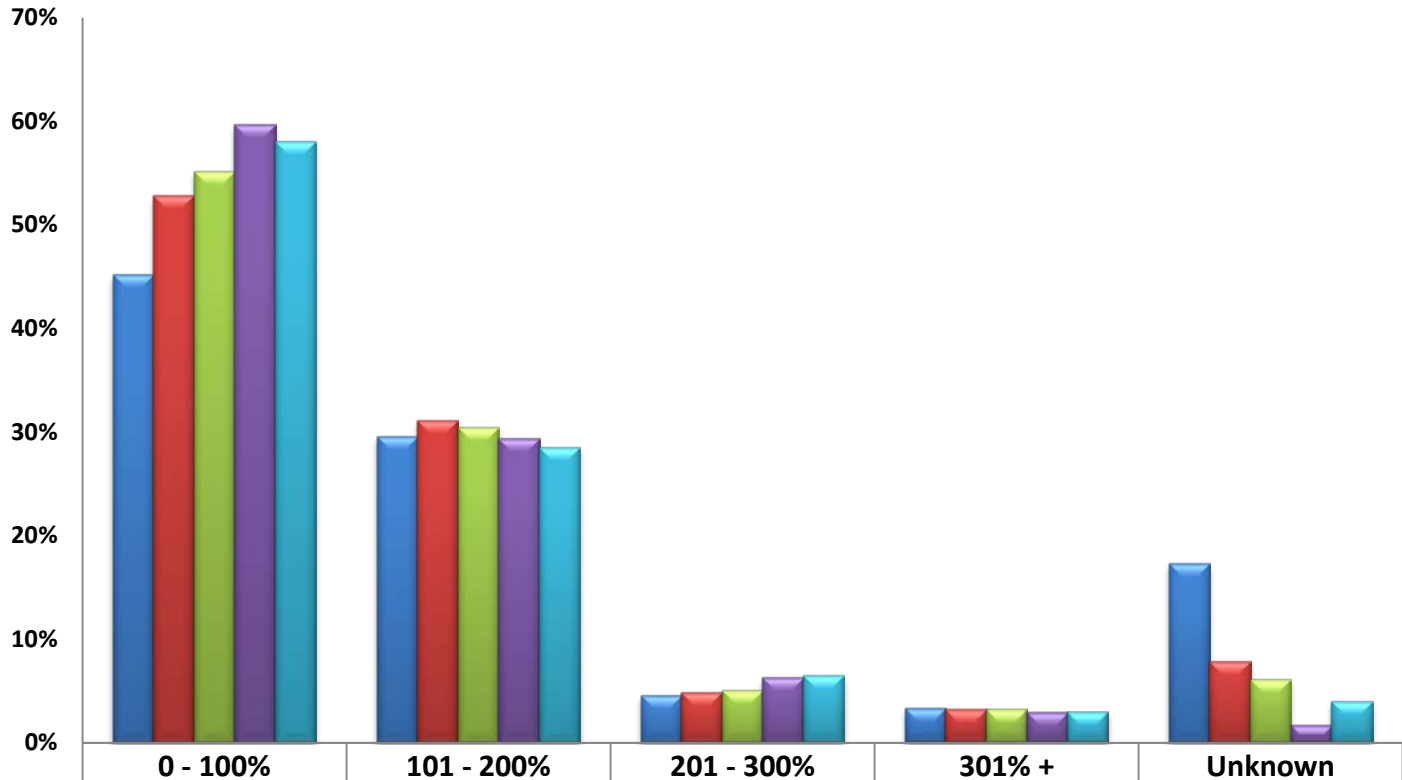
San Francisco



San Mateo



EMA FPL % 2011-2015

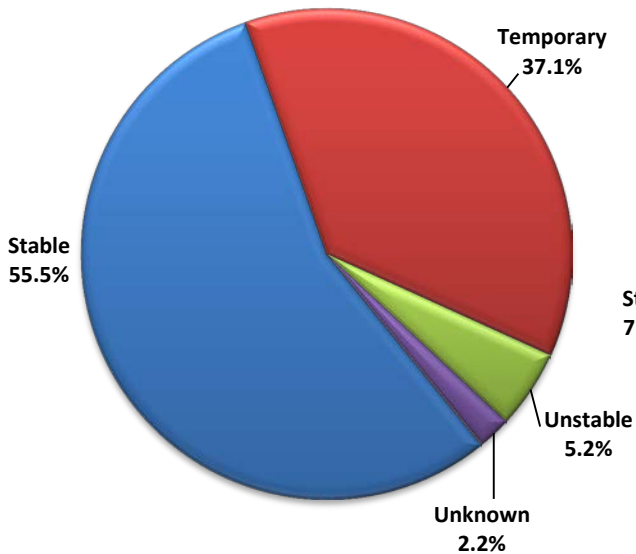


	0 - 100%	101 - 200%	201 - 300%	301% +	Unknown
2011 (N=7625)	45.2%	29.6%	4.6%	3.3%	17.3%
2012 (N=7421)	52.9%	31.2%	4.9%	3.2%	7.9%
2013 (N=7222)	55.2%	30.5%	5.1%	3.2%	6.1%
2014 (N=6915)	59.7%	29.4%	6.3%	2.9%	1.7%
2015 (N=6503)	58.1%	28.5%	6.5%	3.0%	4.0%

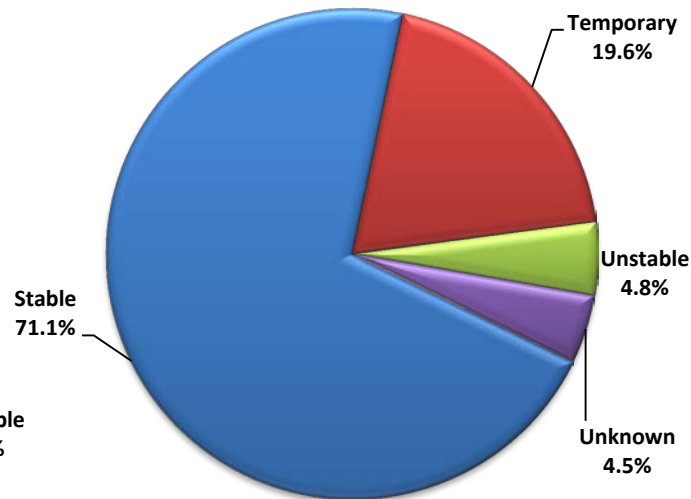
Current Living Situation

Stable	Temporary	Unstable	Unknown
n=4517	n=1400	n=301	n=285
69.5%	21.5%	4.6%	4.4%

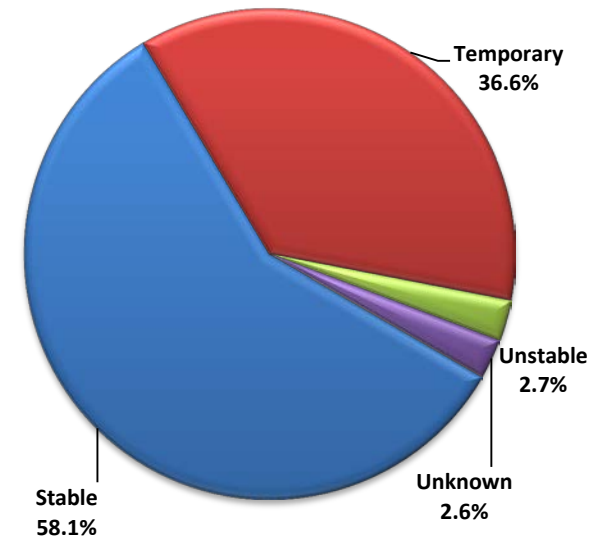
Marin



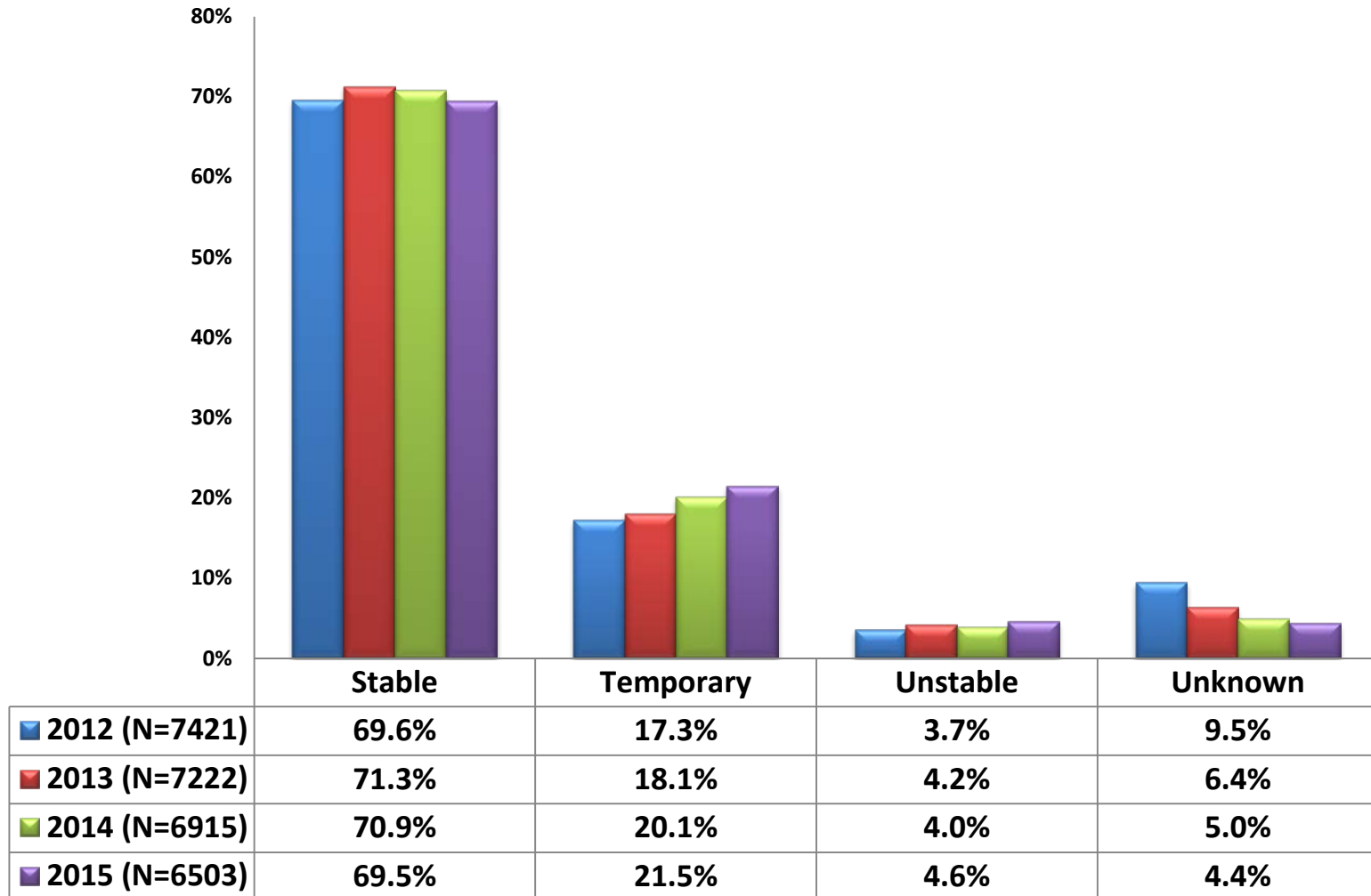
San Francisco



San Mateo



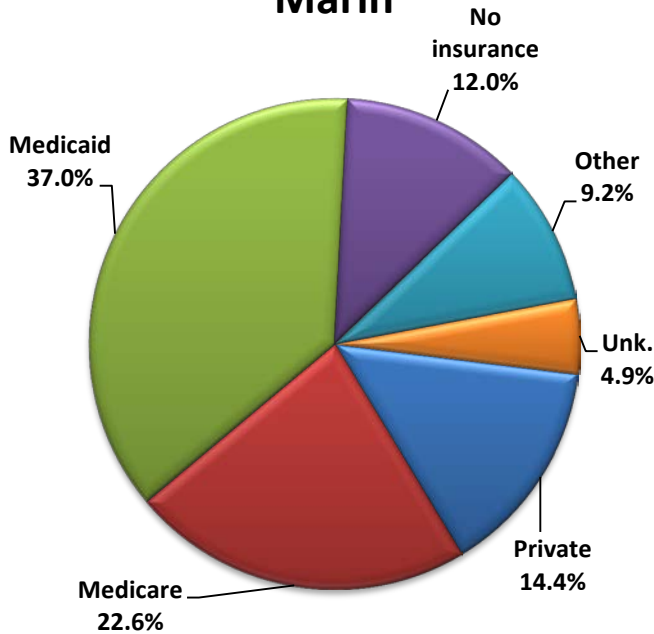
EMA Living Situation 2012-2015



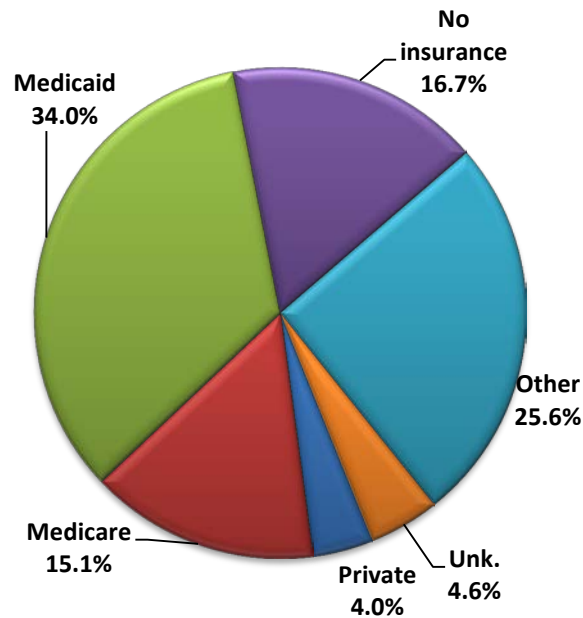
Insurance Status

Private	Medicare	Medicaid	No Insurance	Other	Unknown
n=528	n=1695	n=3786	n=1885	n=2810	n=500
8.1%	26.1%	58.2%	29.0%	43.2%	7.7%

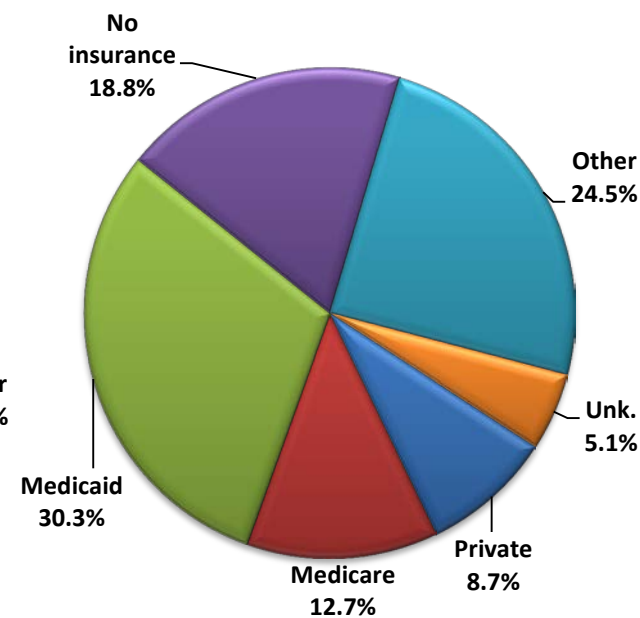
Marin



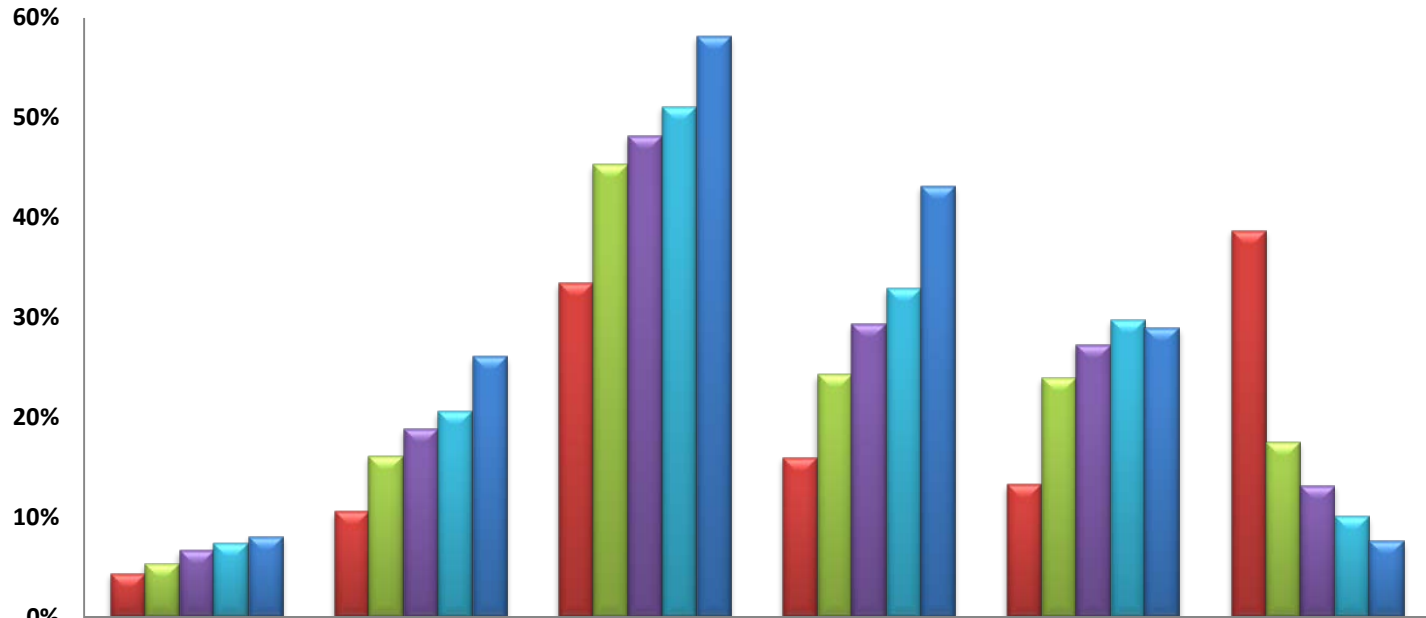
San Francisco



San Mateo



EMA Insurance 2011-2015

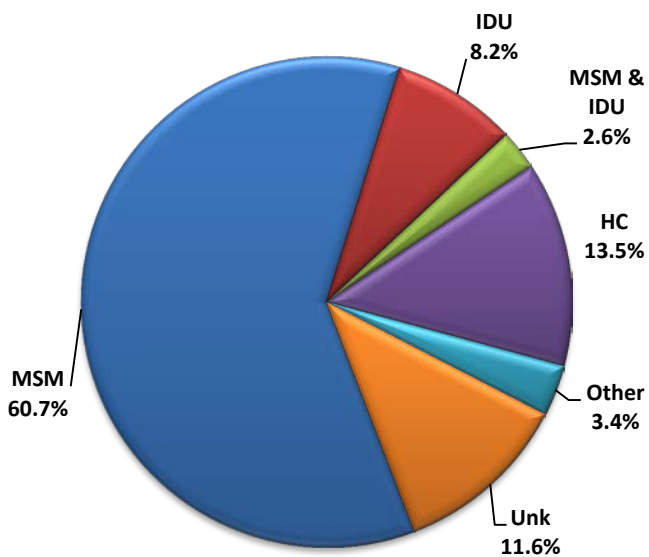


	Private	Medicare	Medicaid	Other	No insurance	Unknown
2011 (N=7625)	4.4%	10.6%	33.5%	16.1%	13.3%	38.8%
2012 (N=7421)	5.4%	16.1%	45.4%	24.3%	24.0%	17.5%
2013 (N=7222)	6.7%	18.9%	48.3%	29.4%	27.3%	13.2%
2014 (N=6915)	7.4%	20.6%	51.2%	32.9%	29.8%	10.1%
2015 (N=6503)	8.1%	26.1%	58.2%	43.2%	29.0%	7.7%

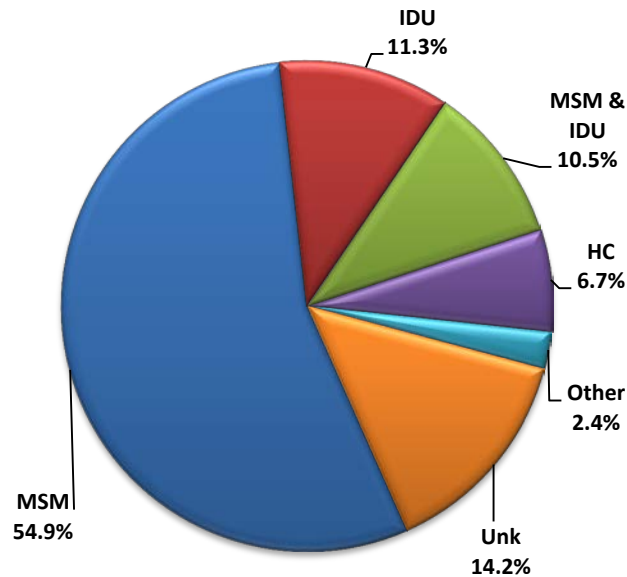
HIV Exposure

Men who have sex with men (MSM)	Injection drug user (IDU)	Men who have sex with men and injection drug user (MSM & IDU)	Heterosexual Contact (HC)	Other	Unknown (Unk)
n=3578	n=708	n=628	n=464	n=168	n=957
55.0%	10.9%	9.7%	7.1%	2.6%	14.7%

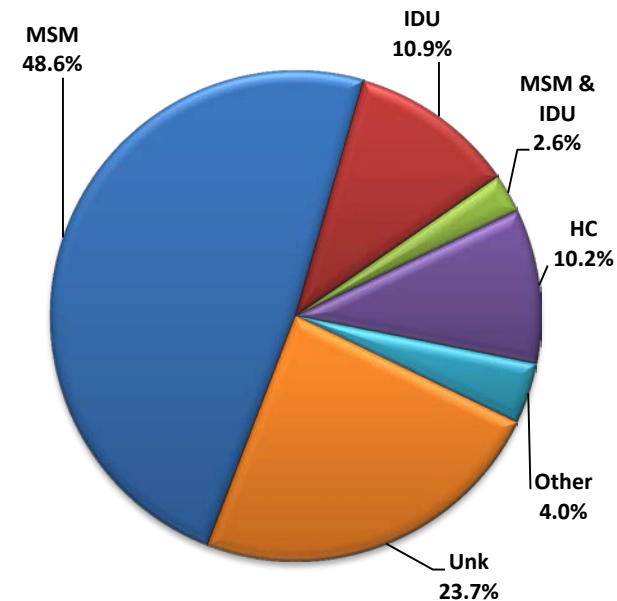
Marin



San Francisco

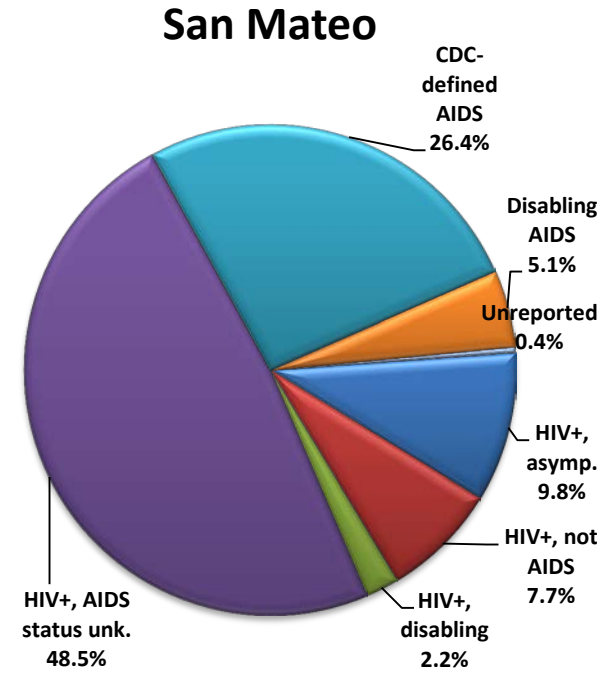
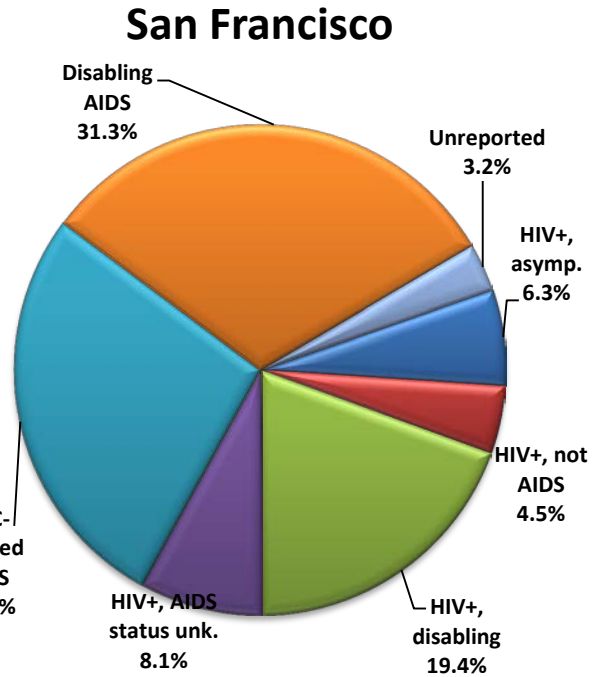
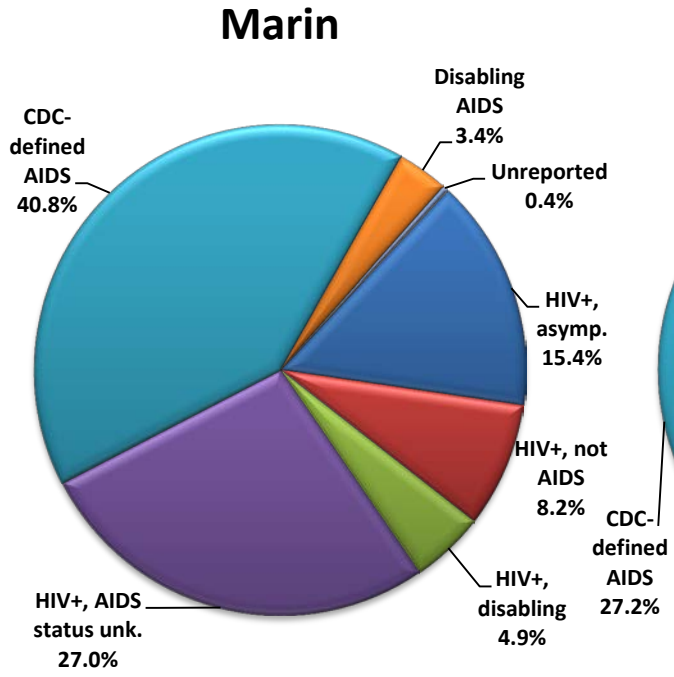


San Mateo



HIV Disease Status

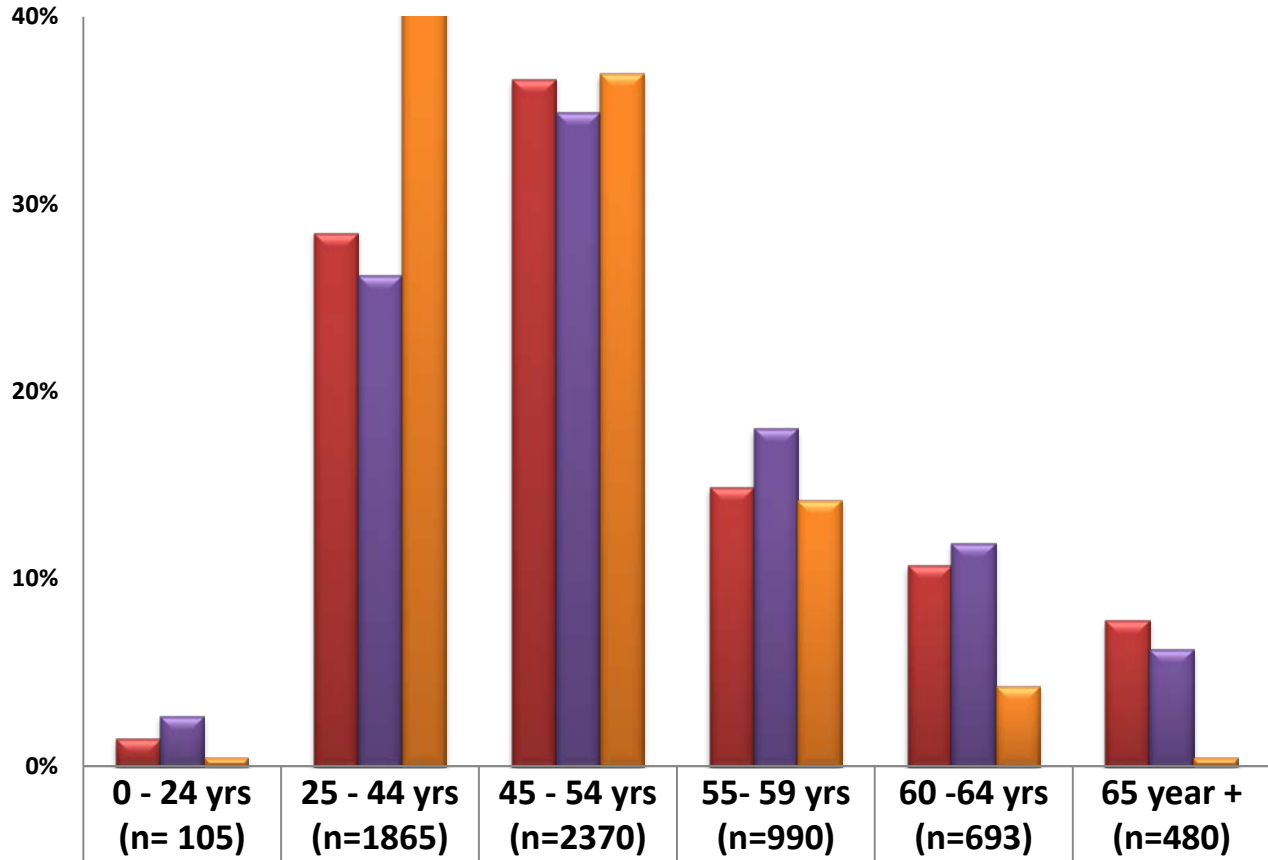
HIV+, Asymptomatic	HIV+, Not AIDS	HIV+, Disabling	HIV+, AIDS Status Unknown	CDC-Defined AIDS	Disabling AIDS	Unreported
n=458	n=310	n=1145	n=737	n=1795	n=1857	n=189
7.0%	4.8%	17.6%	11.3%	27.6%	28.6%	2.9%



Data Question #2

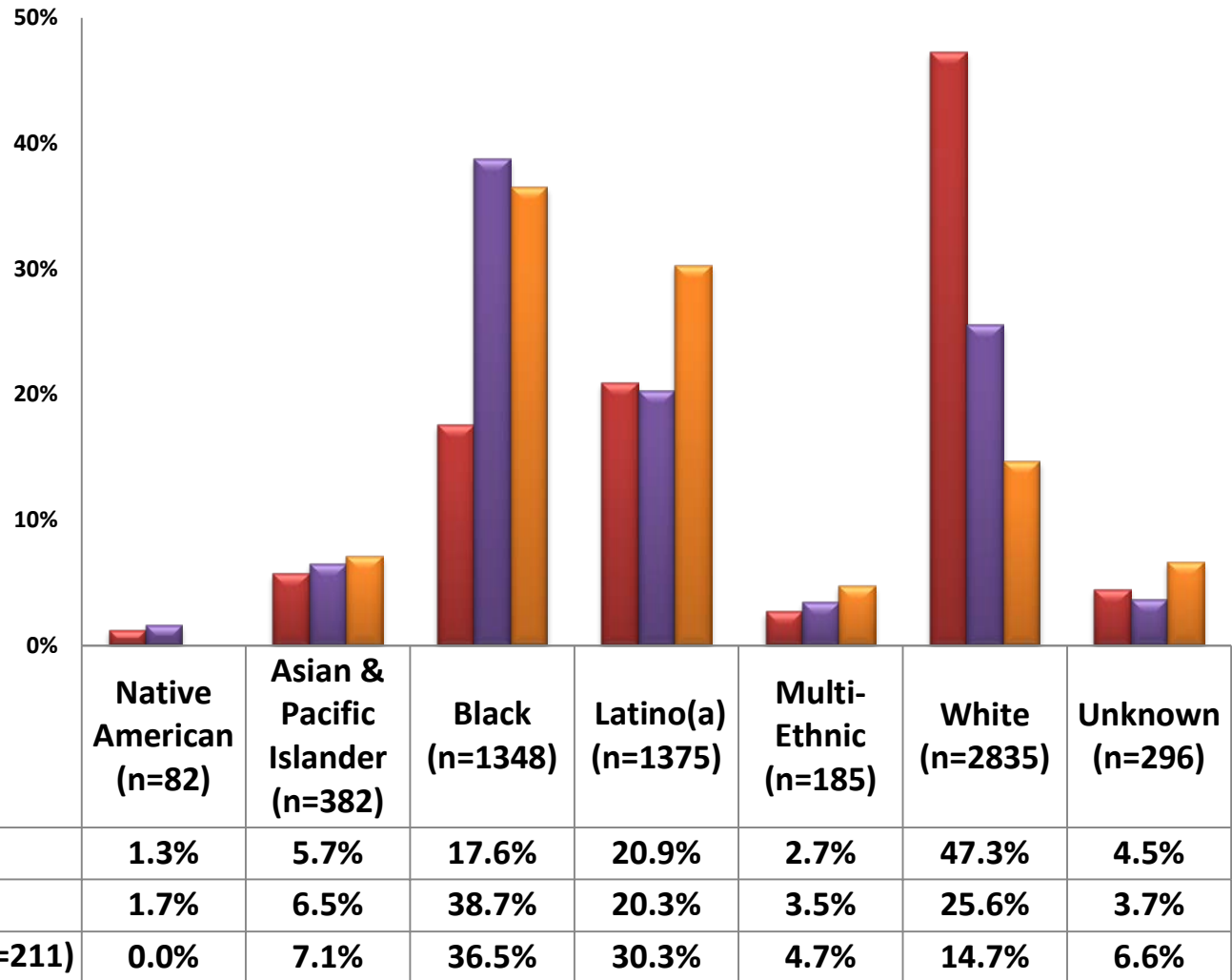
How are the differences reflected according to gender within the EMA?

EMA Gender By Age

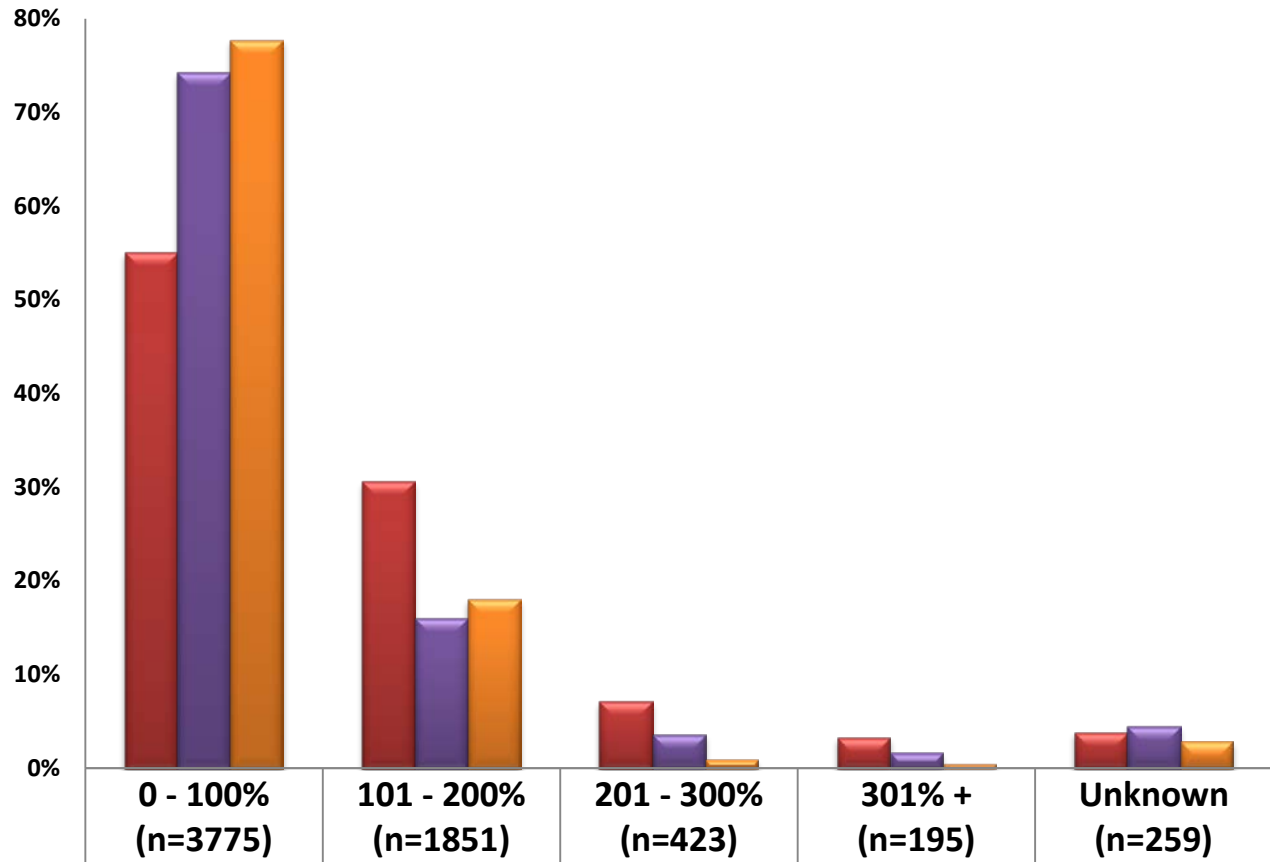


Male (n=5505)	1.5%	28.5%	36.6%	14.9%	10.7%	7.8%
Female (n=782)	2.7%	26.2%	34.9%	18.0%	11.9%	6.3%
Transgender (n=211)	0.5%	43.1%	37.0%	14.2%	4.3%	0.5%

EMA Gender By Race

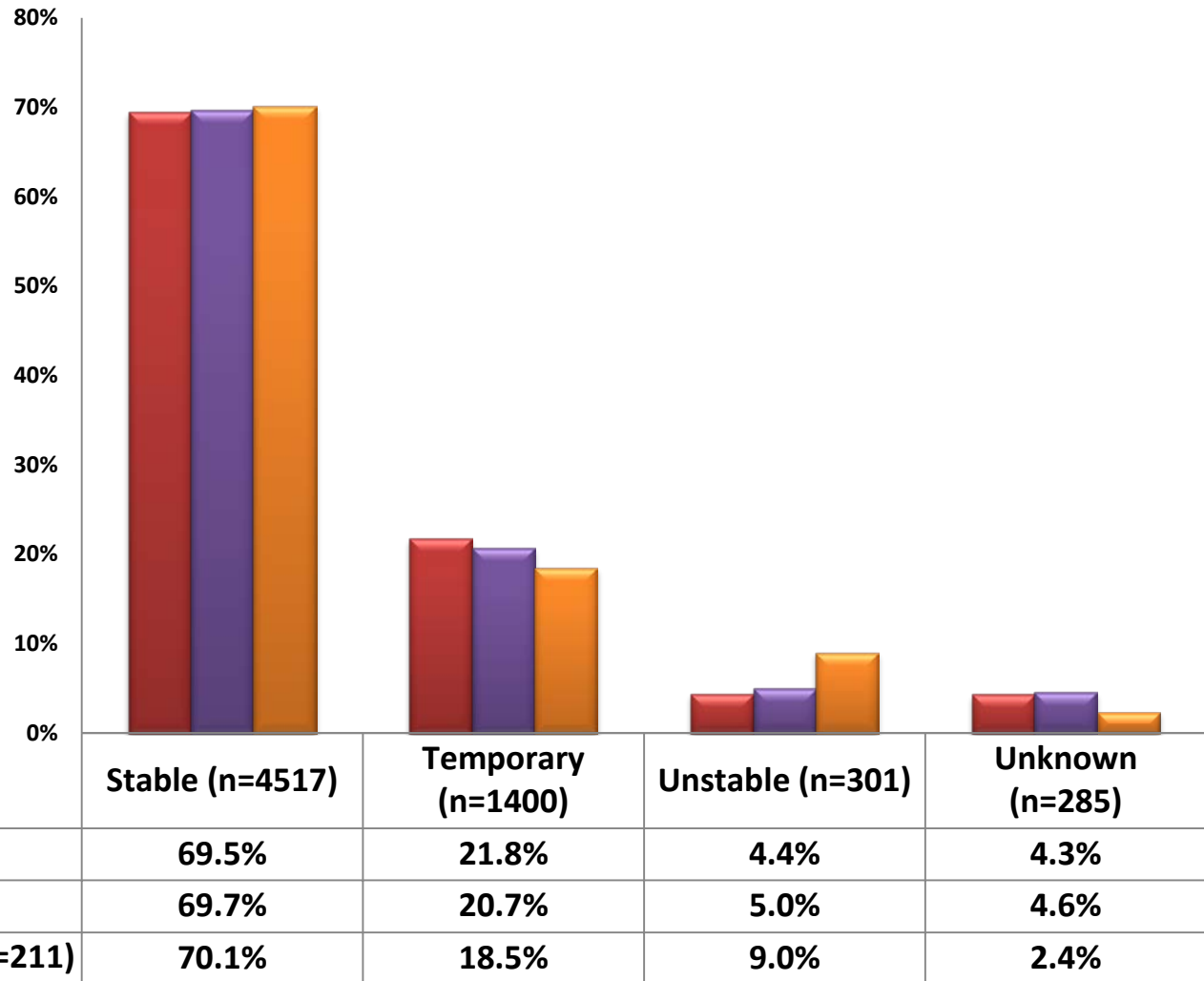


EMA Gender By % of FPL

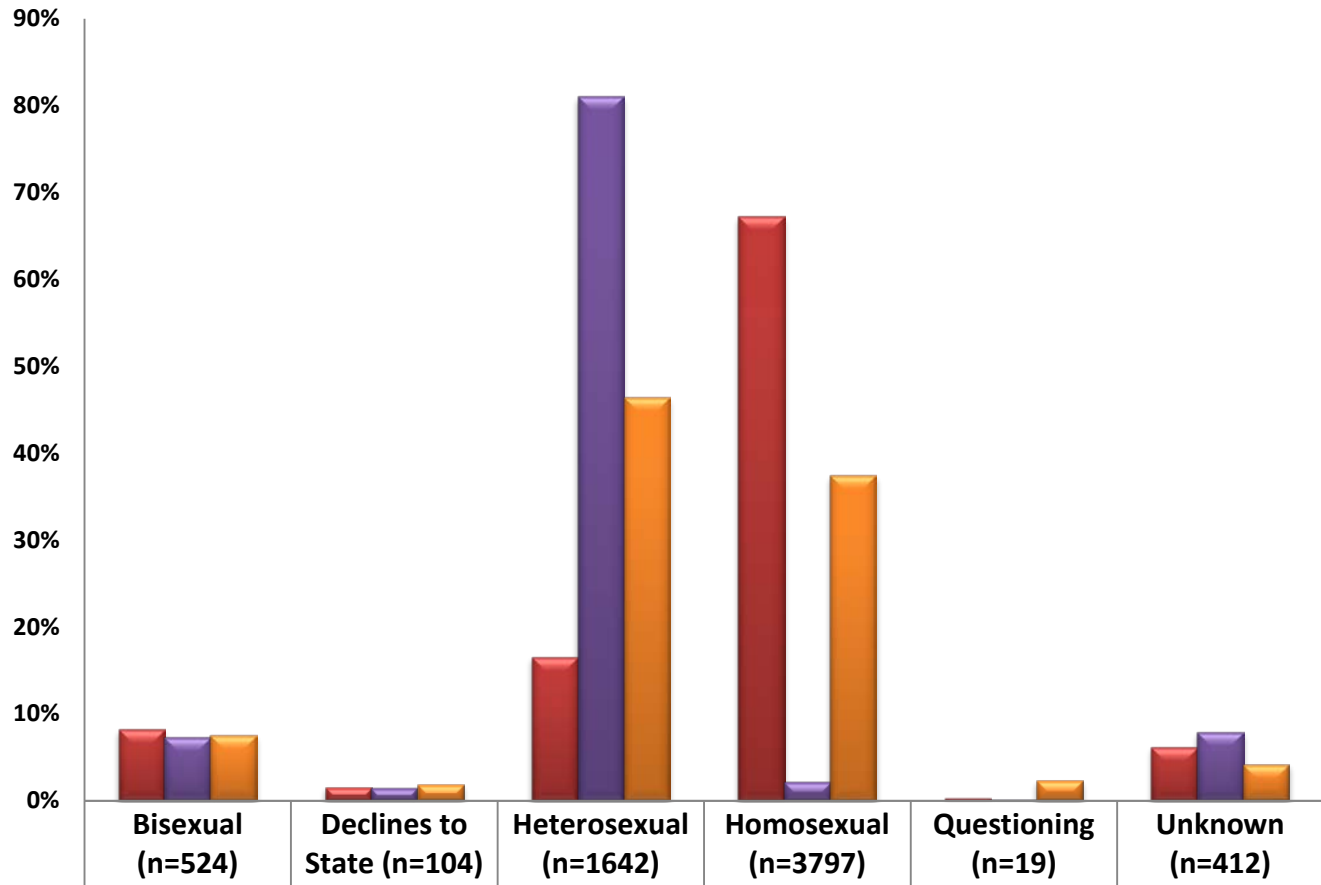


Male (n=5505)	55.0%	30.7%	7.1%	3.3%	3.9%
Female (n=782)	74.3%	16.0%	3.6%	1.7%	4.5%
Transgender (n=211)	77.7%	18.0%	0.9%	0.5%	2.8%

EMA Gender By Current Living Situation



EMA Gender By Sexual Orientation

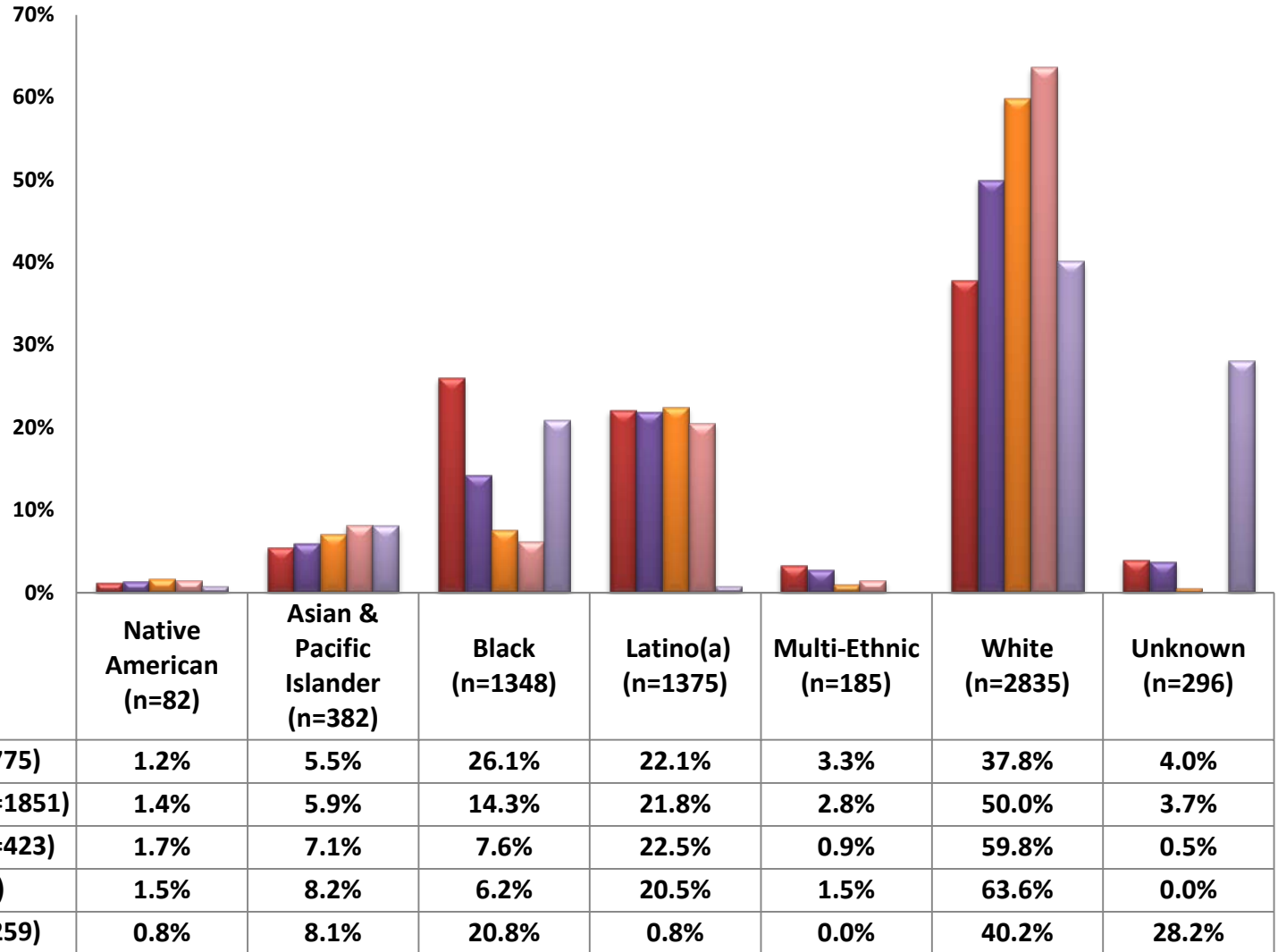


Male (n=5505)	8.2%	1.6%	16.5%	67.2%	0.2%	6.2%
Female (n=782)	7.3%	1.4%	81.1%	2.2%	0.1%	7.9%
Transgender (n=211)	7.6%	1.9%	46.4%	37.4%	2.4%	4.3%

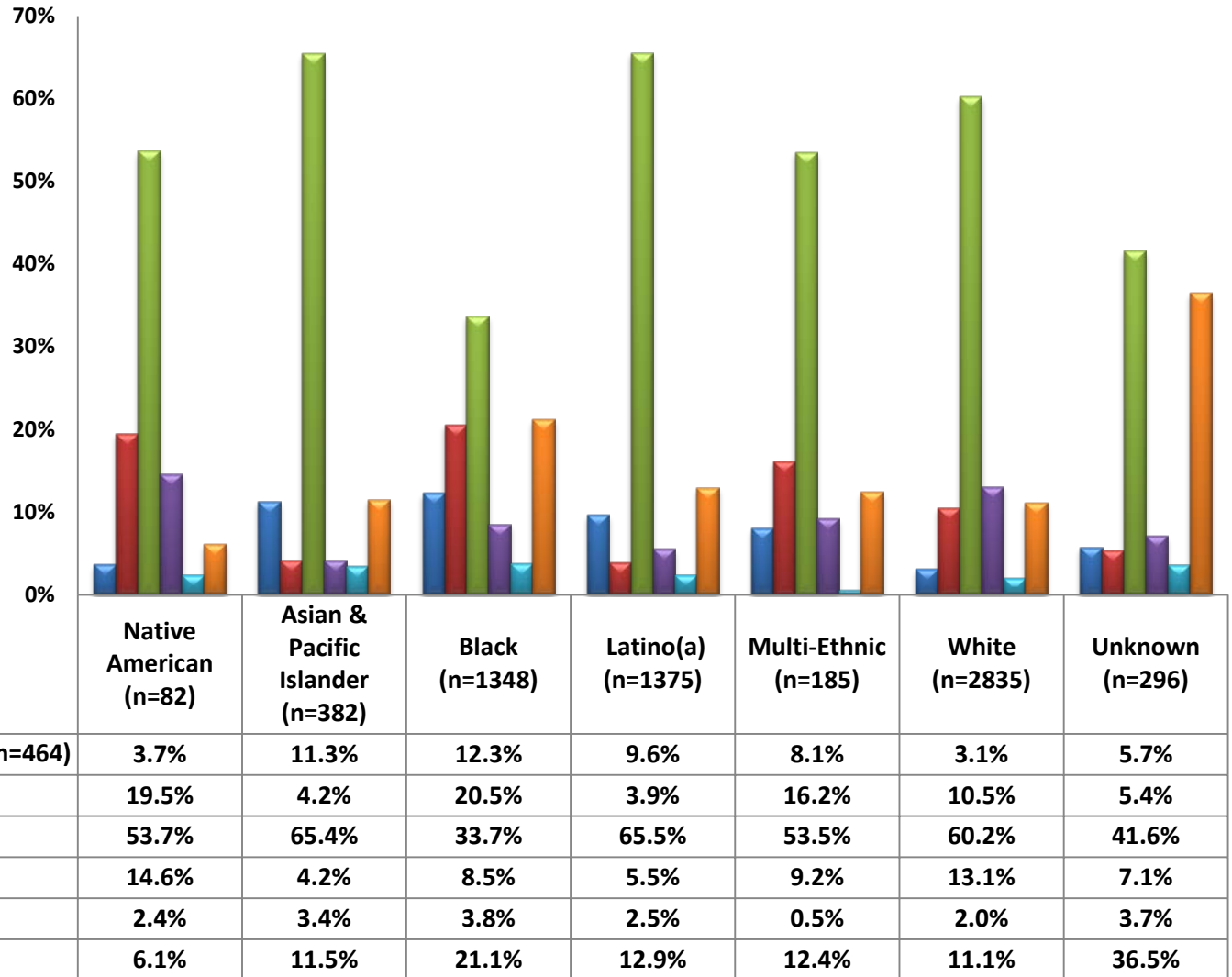
Data Question #3

How are some of the factors affecting health disparities reflected within the EMA?

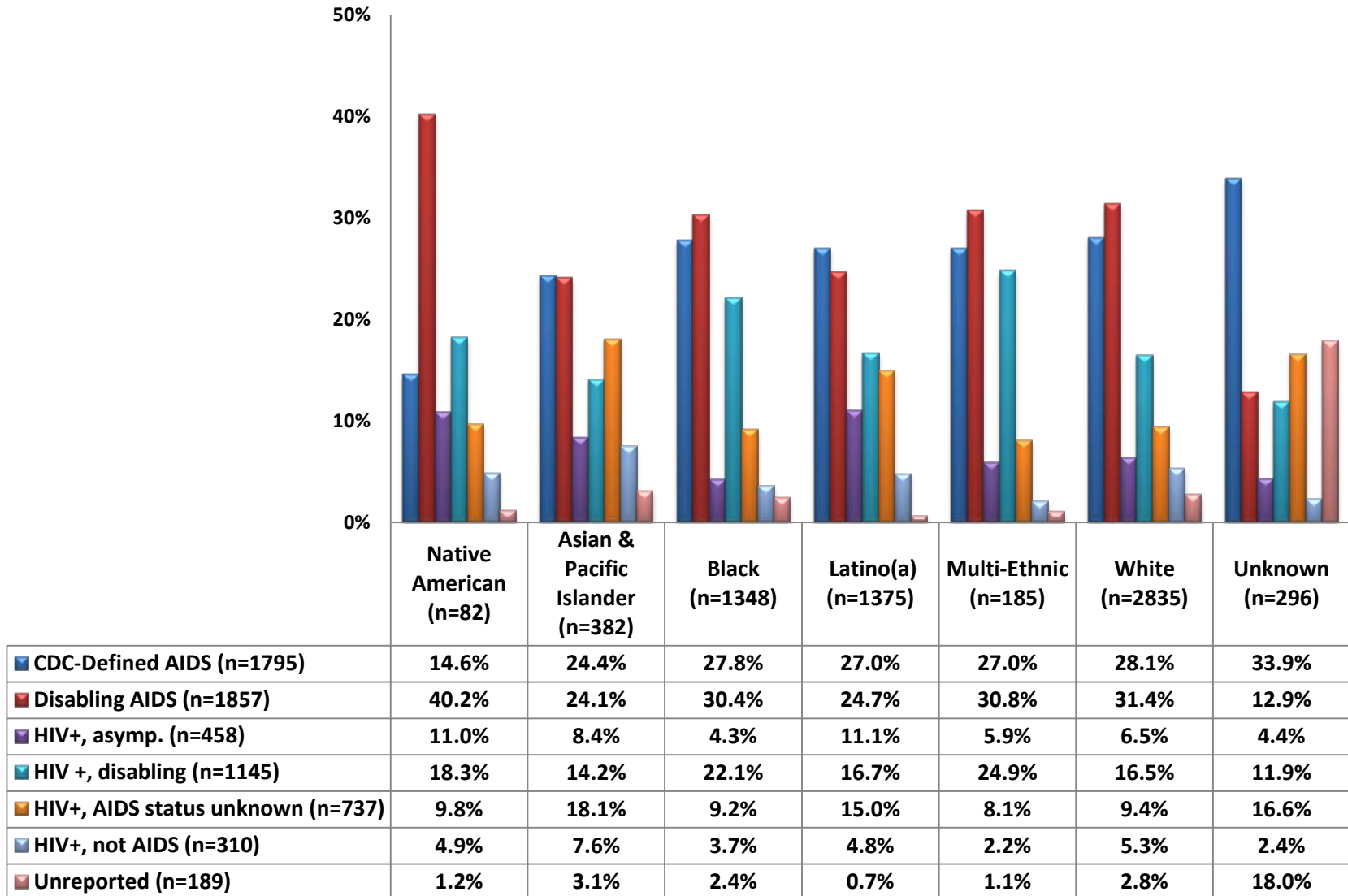
EMA Race By FPL%



EMA Race By HIV Exposure Hierarchy



EMA Race By HIV Disease Status

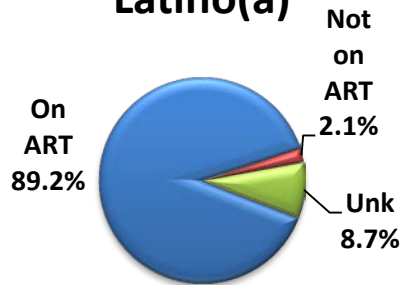


EMA ART By Race*

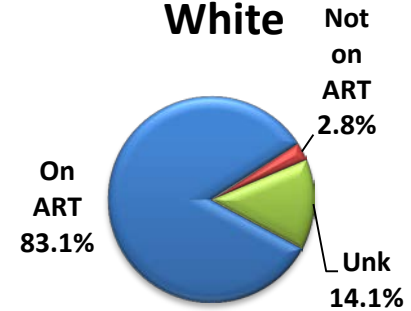
Native American



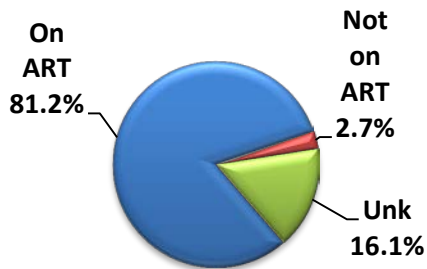
Latino(a)



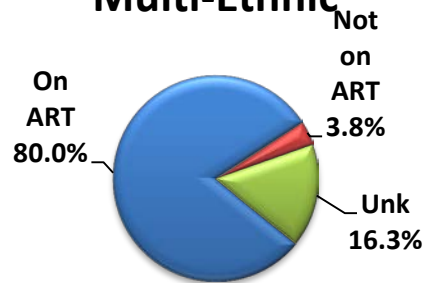
White



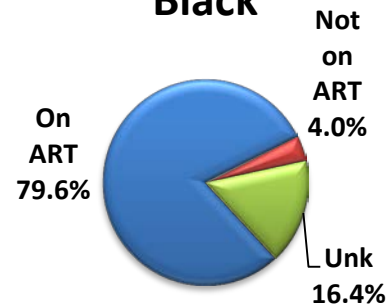
EMA



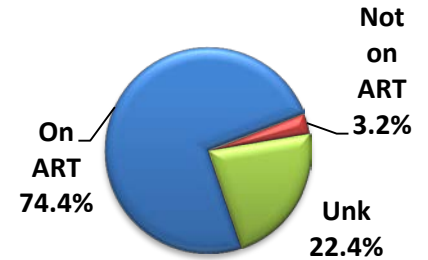
Multi-Ethnic



Black

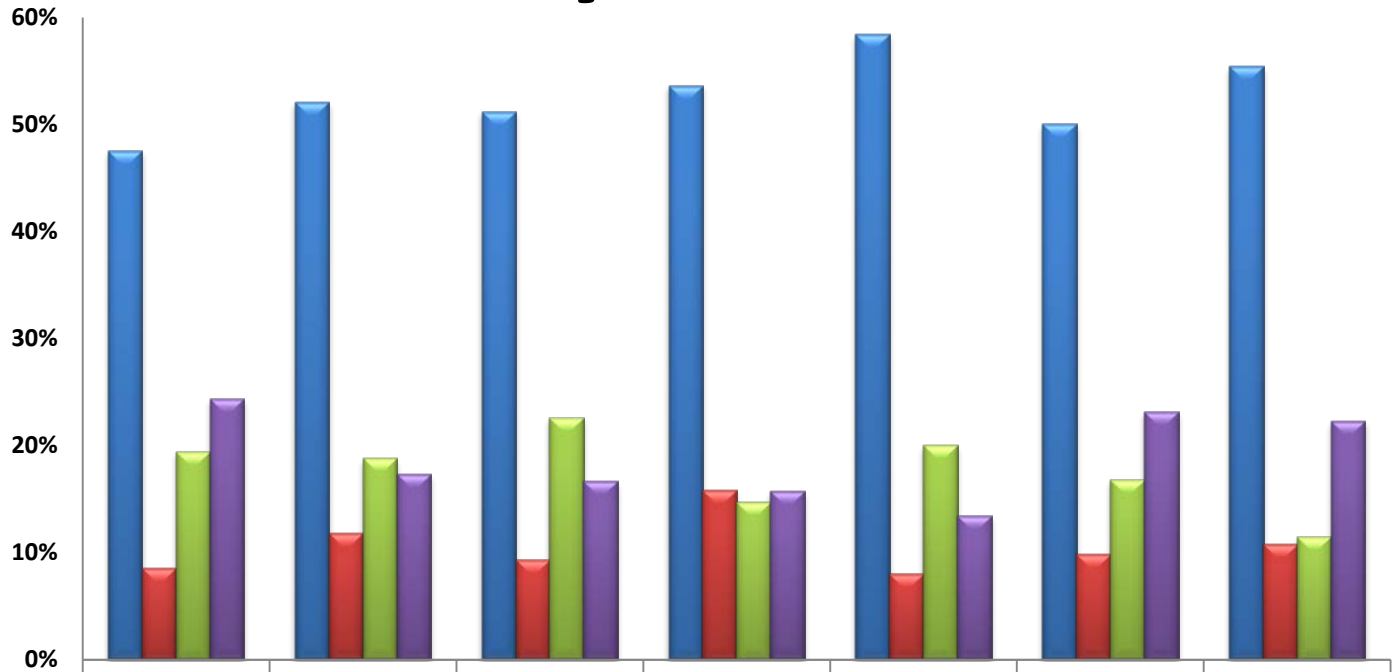


Asian & PI



* Filtered by UDC who received Primary Care Service.

EMA Race By Viral Load



	Native American (n=82)	Asian & Pacific Islander (n=382)	Black (n=1348)	Latino(a) (n=1375)	Multi-Ethnic (n=185)	White (n=2835)	Unknown (n=296)
<50 (n=3359)	47.6%	52.1%	51.3%	53.7%	58.4%	50.1%	55.4%
050-199 (n=723)	8.5%	11.8%	9.4%	15.9%	8.1%	9.8%	10.8%
200 + (n=1145)	19.5%	18.8%	22.6%	14.8%	20.0%	16.9%	11.5%
Unknown (n=1276)	24.4%	17.3%	16.7%	15.7%	13.5%	23.2%	22.3%

EMA Client Summary

	Marin		San Francisco			San Mateo			EMA		
	Male	Female	Male	Female	Transgender	Male	Female	Transgender	Male	Female	Transgender
Age	45-54	25-44	45-54	45-54	45-54	45-54	45-54	25-44	45-54	45-54	45-54
Race	White	Latina	White	Black	Black	Latino	Latina	Latina	White	Black	Black
FPL%	≤ 100% FPL	≤ 100% FPL	≤ 100% FPL	≤ 100% FPL	≤ 100% FPL	≤ 100% FPL	≤ 100% FPL	101-200% FPL	≤ 100% FPL	≤ 100% FPL	≤ 100% FPL
Living Situation	Temporary	Stable	Stable	Stable	Stable	Stable	Stable	Temporary	Stable	Stable	Stable
Insurance Status	Medicaid	Medicaid	Medicaid	Medicaid	Medicaid	Medicaid	Medicaid	Medicaid & Other	Medicaid	Medicaid	Medicaid
Sexual Orientation	Gay	Straight	Gay	Straight	Straight	Gay	Straight	Straight	Gay	Straight	Straight
HIV Exposure	MSM	Heterosexual Contact	MSM	Heterosexual Contact	Transfemale sex with men	MSM	Heterosexual Contact	Transfemale sex with men	MSM	Heterosexual Contact	Transfemale sex with men
Disease Status	AIDS	AIDS	Disabling AIDS	AIDS	Disabling AIDS	HIV+, unknown stage	HIV+, unknown stage	HIV+, unknown stage	Disabling AIDS	AIDS	Disabling AIDS

Value of the Data

- Gives us a good overall picture – a snapshot of a given moment.
- Tells us who is accessing and utilizing our services.
- Assists in sorting, combining and comparing changes across time frames, funding sources and client demographics.
- Provides an opportunity to assess informational congruence among the Epidemiological, Services Summary Sheets, Quality Management Indicators & other data presentations given to the Council.